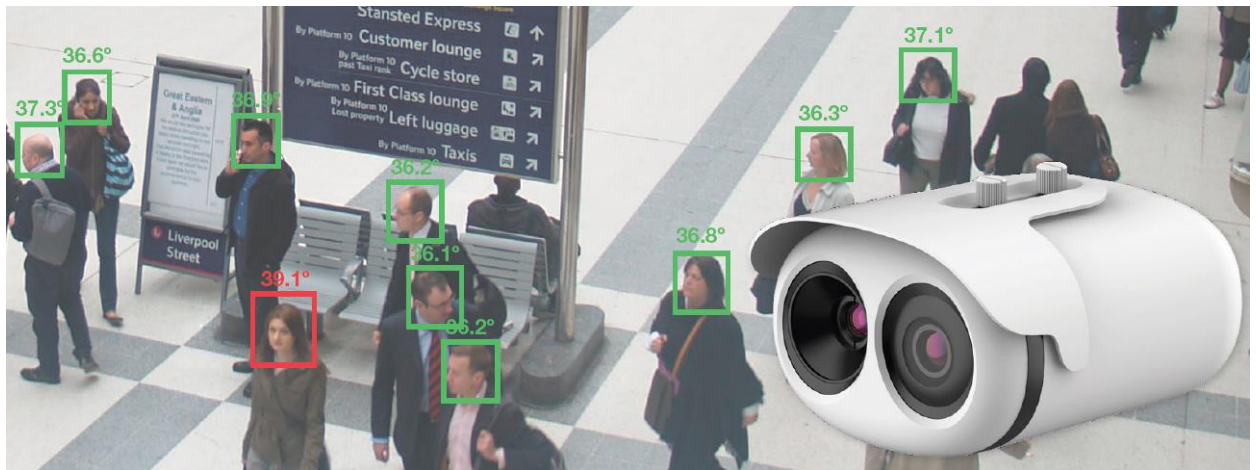


# Thermal Imaging Camera

TIC01



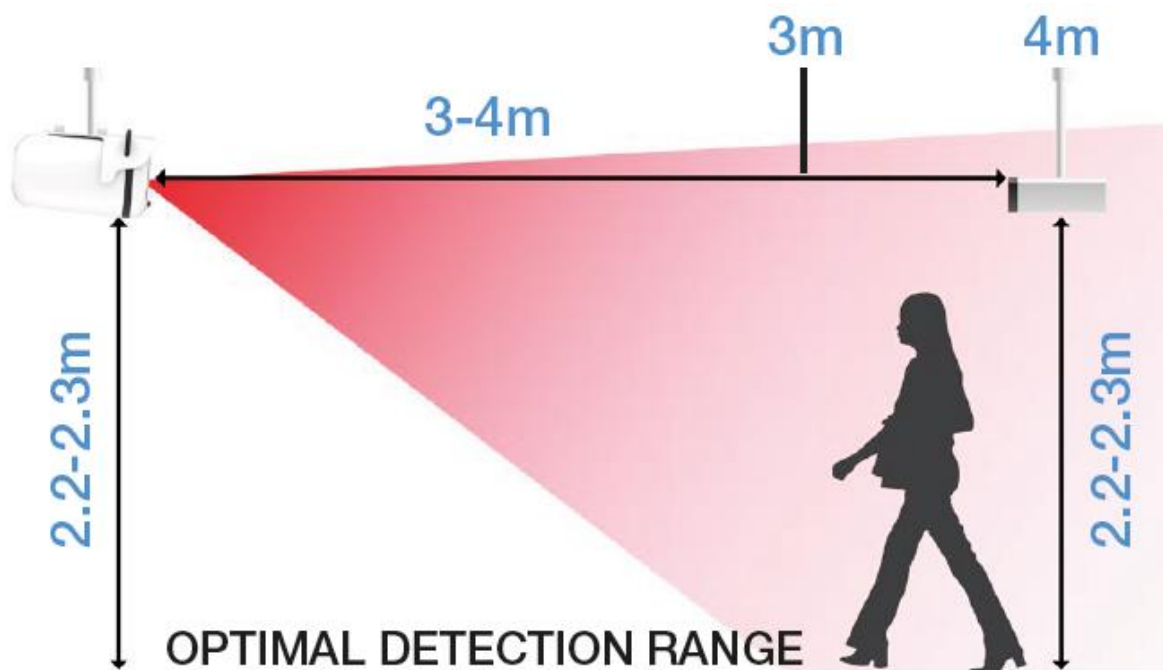
- Fast temperature measurement - <30ms response time
- High temperature accuracy to 0.3°C
- Up to 40 people measured simultaneously
- Long distance, non-contact detection
- Measures only facial temperature
- Mobile App available
- Dual Spectrum Technology (overlay of temperature on live view)
- Licence free software
- Environment calibration
- A complete thermal detection solution

This temperature detection system can accurately detect facial temperatures of up to 40 people at once with an accuracy of  $\pm 0.3^{\circ}\text{C}$ . It is ideal for monitoring body temperatures at entrances to events, sites, transport hubs, and buildings.

Using advanced facial detection, the system uses the face temperature for a more accurate measurement. This also stops any false readings, such as a person carrying a hot drink.

With astonishingly fast response time and being able to measure up to 40 people at once, the system will reduce the need for single file detection, aiding in the speed of people passing through the detection area.

## Thermal Imaging Camera



The system comprises the camera, a temperature calibrating device, and an NVR, as well as all the necessary brackets for installation.



CAMERA



TEMPERATURE  
CALIBRATOR



NVR

Ends